

## GENERAL APPLICATIONS

## AF

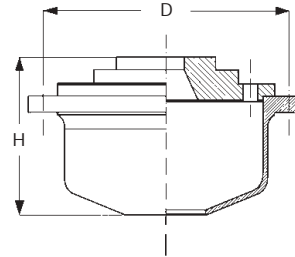
## COKE OVEN NOZZLES

AF are designed for coke quenching processes.

Thanks to their very uniform spray distribution, a rapid quench is obtained without hot spots.

Their wide chamber and multi-orifice disc shaped vane provide excellent velocity distribution inside the nozzle, which results in a fast and uniform cooling: low values for process water and coke moisture percentage are easily obtained.

The wide inside passages exclude the possibility of any clogging danger.



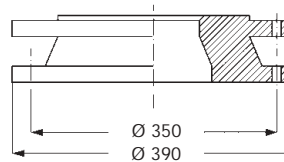
Materials	A1	Carbon steel
	B31	AISI 316L Stainless steel
	G1	Cast Iron
Spray angle	90°	

Tip Code	D1 mm	Nozzle capacity at pressure values							Spray Coverage (mm) at pressure values (bar)		
		0.3	0.4	0.5	1.0	1.5	2.0	3.0	0.5	1.0	1.5
<b>AFU 3520 xx</b>	6.0	165	190	213	301	368	425	520	2900	3200	3350
<b>AFU 3820 xx</b>	7.5	260	300	335	474	580	670	820	3100	3300	3450
<b>AFU 4110 xx</b>	9.5	348	400	450	636	780	900	1100	3300	3500	3650
<b>AFU 4171 xx</b>	11.9	542	626	700	985	1210	1400	1715	3350	3550	3700
<b>AFU 4275 xx</b>	13.1	870	1000	1120	1580	1940	2240	2745	3500	3700	2800
<b>AFU 4435 xx</b>	13.5	1380	1590	1770	2500	3070	3550	4350	3700	3800	3750
<b>AFU 4686 xx</b>	16.9	2170	2500	2800	3960	4850	5600	6860	3700	3800	3750

## ADAPTING FLANGES

AE nozzles can be supplied complete with an adapting flange for connection to the plant existing piping.

Our offices will quote these flanges on request.



## NOZZLE DIMENSIONS

Tip Code	D	H
<b>AFU 4110 xx</b>	180	100
<b>AFU 4171 xx</b>	210	121
<b>AFU 4275 xx</b>	240	150
<b>AFU 4435 xx</b>	295	190
<b>AFU 4686 xx</b>	350	240