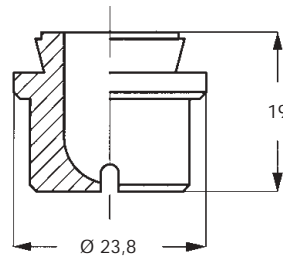


ROLLING MILL

GY

ROLL COOLING NOZZLES

Proper roll cooling assures uniform strip thickness, and requires even water coverage. The even spray distribution of the GY series tips avoids sudden temperature changes and consequent expansion or contraction, which results in the need for roll re-grinding. The final result of a proper roll cooling is then a more even roll wear, longer life, longer production runs with more consistent steel quality.



Material B1 AISI 303 Stainless steel
 T1 Brass

Tip Code	Capacity at different pressure values							(lpm)
	1.0	2.0	3.0	4.0	5.0	7.0	10	(bar)
• GYC	•	•	•	•	•	•	•	•
• GYF	•	•	•	•	•	•	•	•
• GYM	•	•	•	•	•	•	•	•
• GYQ	•	•	•	•	•	•	•	•
• 1781xx	4.50	6.30	7.80	9.00	10.0	11.8	14.1	
• 1981xx	5.70	8.00	9.80	11.3	12.6	15.0	17.9	
• 2125xx	7.20	10.1	12.4	14.3	16.0	18.9	22.4	
• 2154xx	8.80	12.5	15.3	17.7	19.8	23.4	28.0	
• 2195xx	11.2	15.8	19.4	22.4	25.0	29.6	35.4	
• 2246xx	14.2	20.0	24.5	28.3	31.5	37.4	44.8	
• 2311xx	17.8	25.0	31.0	35.8	40.0	47.4	56.6	
• 2490xx	28.0	40.0	49.0	56.0	63.0	75.0	90.0	
• 2610xx	35.3	50.0	61.0	70.7	79.1	93.5	112	
• 2760xx	45.0	63.0	76.0	90.0	100	118	141	

CODE	ANGLE
GYC	20°
GYF	30°
GYM	45°
GYQ	60°

ASSEMBLY PARTS

See our catalogue CTG AC18 BR for welding nipples and locknuts.



ZAC NIPPLES